

YOUR RELIABLE
**INVESTMENT
LOCATION**
IN VIETNAM

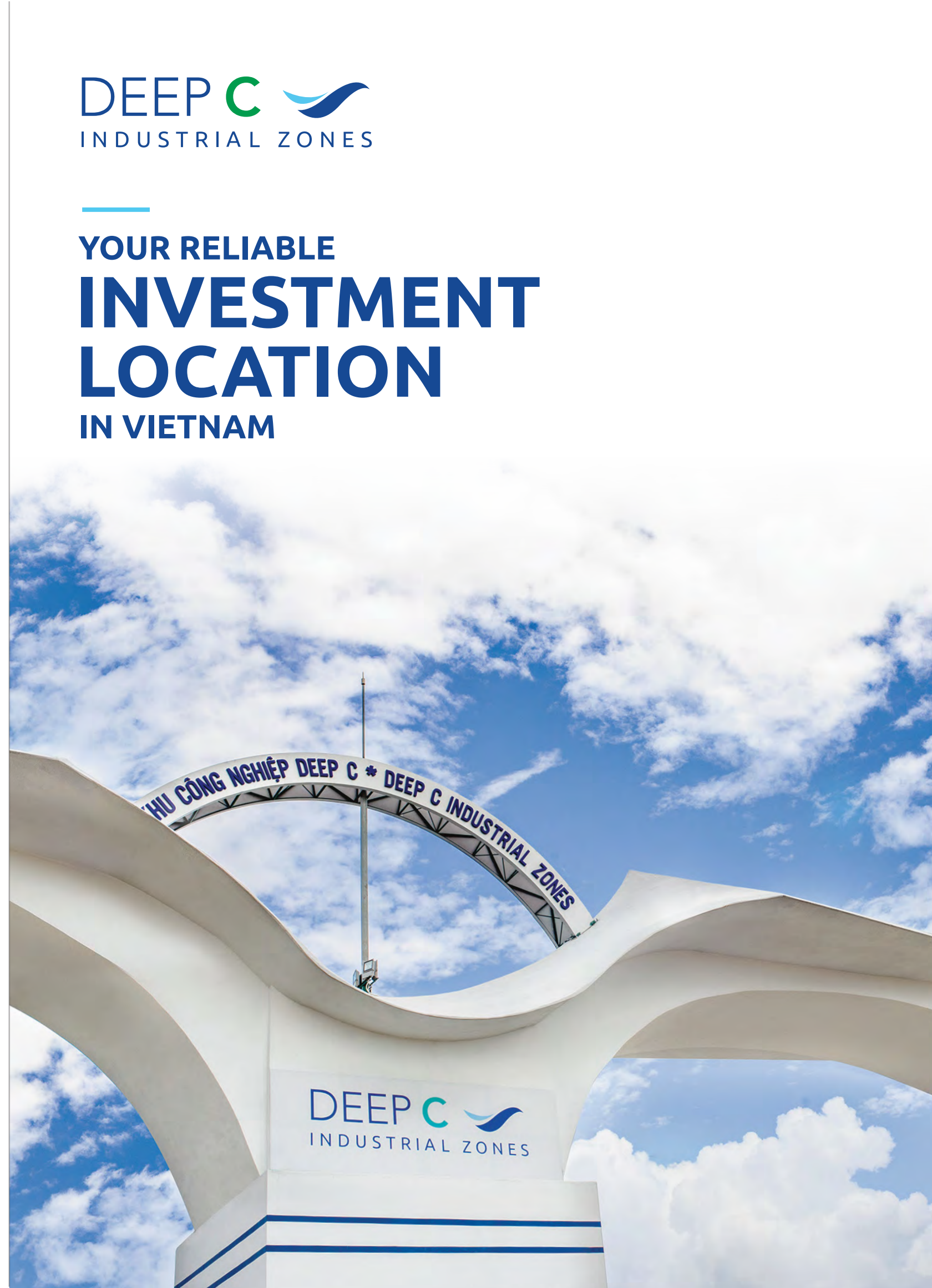


HAIPHONG OFFICE

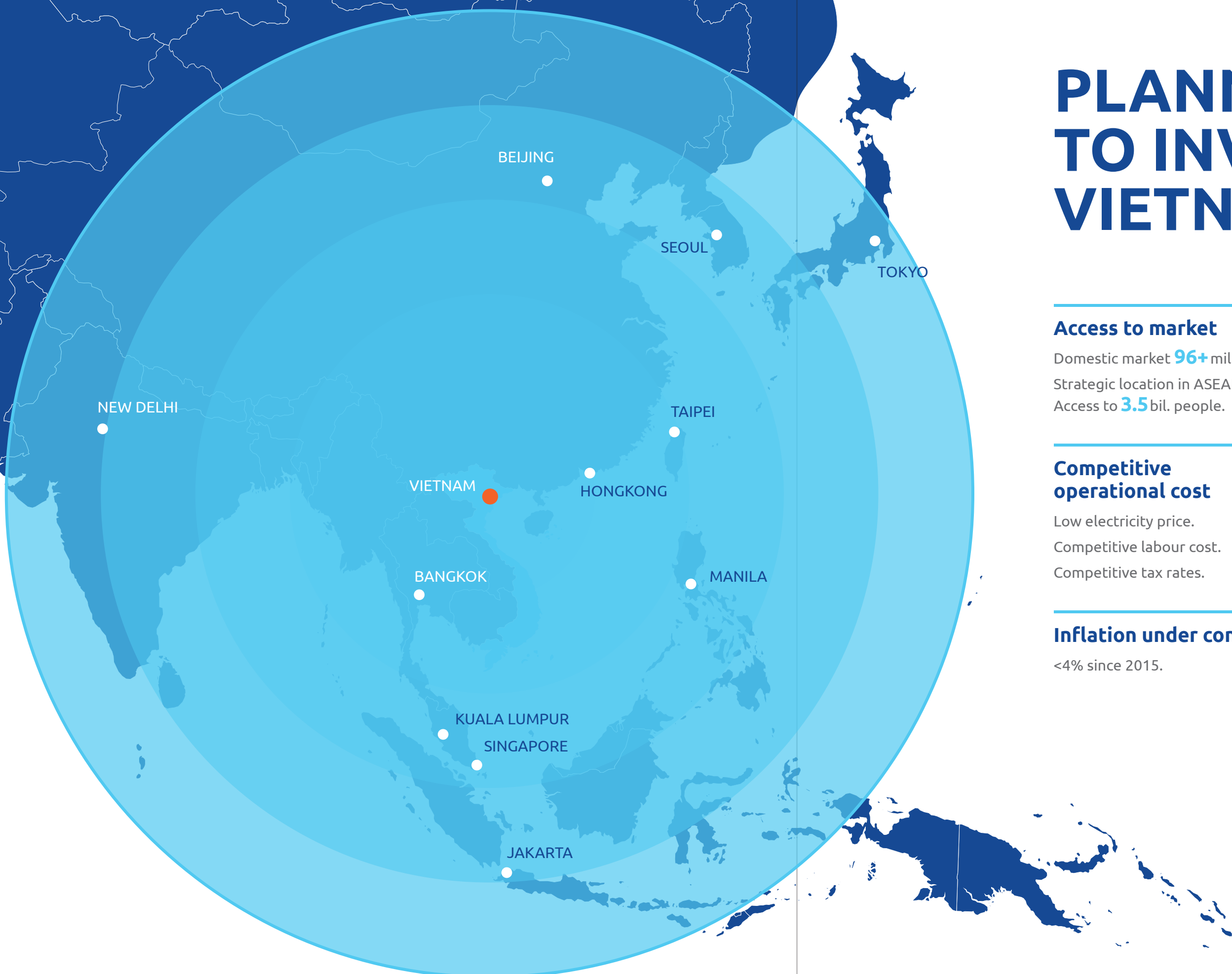
5th floor, Harbour View Office Tower, 12 Tran Phu
Ngo Quyen, Haiphong
Tel: +84 225 3836 169
Email: info@deepc.vn – Website: www.deepc.vn

QUANG NINH OFFICE

No. 8-9 My Gia Street, Vinhomes Dragon Bay
Ha Long residential area, Hong Gai ward,
Ha Long city, Quang Ninh province
Tel: +84 2033 567 848



PLANNING TO INVEST IN VIETNAM?



Access to market

Domestic market **96+** mil. people.
Strategic location in ASEAN.
Access to **3.5** bil. people.

One of the most open & integrated economies

Free Trade Agreements connecting to **78%** of the world's GDP.

Competitive operational cost

Low electricity price.
Competitive labour cost.
Competitive tax rates.

Competitive labour force

Abundant and hardworking.
Average age of **30** years.

Inflation under control

<4% since 2015.

Stable political climate

CONNECTIVITY

3.5 billion people (50% of the world's population) within 3,500km - approx. 5 days of shipping, or 5 hours flying time.

VIETNAM RISES 14 PLACES
in the World Bank's Ease of Doing Business Rankings 2018

**TOP 10
GREENFIELD
FDI
PERFORMANCE
INDEX**

—
FDI Intelligence

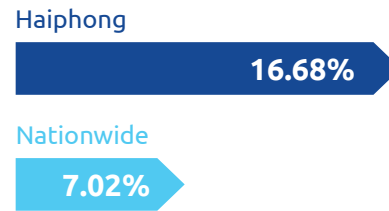
HAIPHONG

Population



- Total: **2 million**
- In working age: **1.2 million ~ 60%**

GDP Growth rate



FDI inflow

+770 projects
+18.7 bil. USD capital
 (2019 data)

- Major port and industrial city of north Vietnam
- 105 km east of Hanoi
- International hotels, hospitals, schools are available
- Main ports:
 - Haiphong Port 20,000DWT
 - Lach Huyen Deep Sea Port 100,000DWT

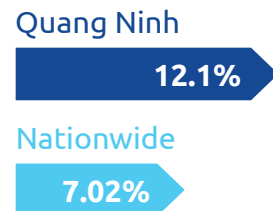
QUANG NINH

Population



- Total: **1.3 million**
- In working age: **780,000 ~ 60%**

GDP Growth rate



FDI inflow

+120 projects
+6.3 bil. USD capital
 (2019 data)

- Industrial and touristic province
- 130 km north east of Hanoi
- Local amenities develop intensively alongside Ha Long Bay
- Main ports:
 - Cai Lan Port 30,000DWT



Noi Bai Int'l Airport



HANOI

Hanoi - Haiphong Expressway

Coastal Expressway

HAIPHONG

Cat Bi Int'l Airport

DEEP C Quang Ninh

DEEP C Haiphong

Haiphong - Quang Ninh - China border Expressway

QUANG NINH

DEEP C Quang Ninh

Cai Lan Port



Van Don Int'l Airport



Hanoi - Haiphong Expressway

105 km
 Max speed: 120 km/hour.

Haiphong - Quang Ninh - China border Expressway

25km from Haiphong to Ha Long with Bach Dang bridge.
 54km from Ha Long to Van Don completed.
 80km from Van Don to Mong Cai (border to China) to be completed in 2021.
 12 hours trucking Haiphong - Shenzhen (China) by 2021.

Coastal Highway

550 km
 Connecting 6 coastal provinces Quang Ninh - Thanh Hoa.

Haiphong Port 20,000DWT

Draft: -7m ~ -9m
 # Cargos: 130 mil. tons (2019)

Cai Lan Port 40,000DWT

Draft: -10m
 # Cargos: 99.3 mil. tons (2019)

Lach Huyen Deep Sea Port 100,000DWT

Draft: -14m
 # Cargos: 419,351 TEUs (2019)
 Est. 120 mil. tons (2030)
 Operational: May 2018 (first 2 berths)



Hanoi Noi Bai Int'l Airport

New terminal, new runways
 # Passengers: ~21 mil./year
 # Cargos: 203,000 tons/year
 Possibility of expansion: ~50 mil. passengers/year (2030)

Haiphong Cat Bi Int'l Airport

Passengers: ~3.2 mil./year
 Planned expansion: ~13 mil. passengers/year & 250,000 tons cargos/year.



Quang Ninh Van Don Int'l Airport

Passengers: est. 2.5 mil./year
 # Cargos: est. 10,000 tons/year



Hanoi - Haiphong Expressway



DEEP C INDUSTRIAL ZONES

STRATEGIC LOCATION

At the centre of North Vietnam's infrastructure developments

DEEP C Industrial Zones was first established in 1997 in Haiphong City with the development of Dinh Vu Industrial Zone (DVIZ/DEEP C Haiphong I), a collaboration between the Belgian group Rent-A-Port and Vietnamese local authority. Since then, we have evolved to be one of the largest industrial zone developers in Vietnam with a total of 5 industrial zones and +3,500ha of land for lease in Haiphong city & Quang Ninh province, supported by general infrastructures and reliable utilities.

INDUSTRIAL LAND FOR LEASE



READY-BUILT WORKSHOP/ WAREHOUSE/ OFFICES



Size of 5,400m² | 4,050m² | 2,700m² | 1,350m²

Floor loading capacity 2.5T/m²

Free height +9m

Built-to-suit options available

RELIABLE UTILITIES AND SERVICES

Park Management



Power



- › Reliable incoming source (national grid & regional grid as backup).
- › Underground distribution.
- › Redundant network design.
- › Ongoing development of renewable energy.



Water & Waste Water

- › Redundant treated water supply.
- › Demineralized water and steam.
- › Central waste water treatment plant certified with ISO 9001 & 14001.

Drainage



Telecommunication Network

Redundant distribution networks. Flexibility to choose between different suppliers.

Energy Hub



Easy access to fuels and chemicals supply from tenants in DEEP C Hai Phong I's Petrochemical Park.

Fire-fighting System

Underground loop system.

Waste Collection Service

SUPPORTING SERVICES

- › Dedicated customer service team.
- › Support for Investment Registration Certificate and Business Registration Certificate applications.
- › Post-licensing services.



ECONOMIC ZONE TAX INCENTIVE

- › 4.35% Corporate Income Tax on average for the first 15 years.
- › Applied from the first commercial invoice.
- › Maximum delay of 3 years in case of no profit.
- › Normal Corporate Income Tax rate: 20%.

Case 1: Making profit from 1st year of establishment

First 4 years 0%	9 years 5%	2 years 10%	Y16 th onwards 20%
----------------------------	----------------------	-----------------------	-----------------------------------------

Case 2: Making profit from 4th year of establishment

3 years No Profit	4 years 0%	8 years 5%	1 year 10%	Y17 th onwards 20%
----------------------	----------------------	----------------------	----------------------	-----------------------------------------

OUR LONG-TERM PARTNERS

+120 investors from a wide variety of industries and nationalities.



We were operating in another industrial zone before, but we decided in 2008 to be the first Japanese runner in DEEP C because of three main reasons: location, expectation of the infrastructure development, and the tax incentives.



Mr. Akira Yamamoto
General Director
Nakashima Vietnam Co., Ltd.



As the very first client coming to DEEP C, over 20 years we have witnessed the growth of DEEP C as well as the continuous improvement they have put in place, from reliable power supply to upgraded liquids jetty condition. This has contributed to our own growth, so we could start exporting in 2013 and expand our operation twice.



Mr. Vu Anh Tuan
Supply Chain Manager
Chevron Lubricants Vietnam Co., Ltd.